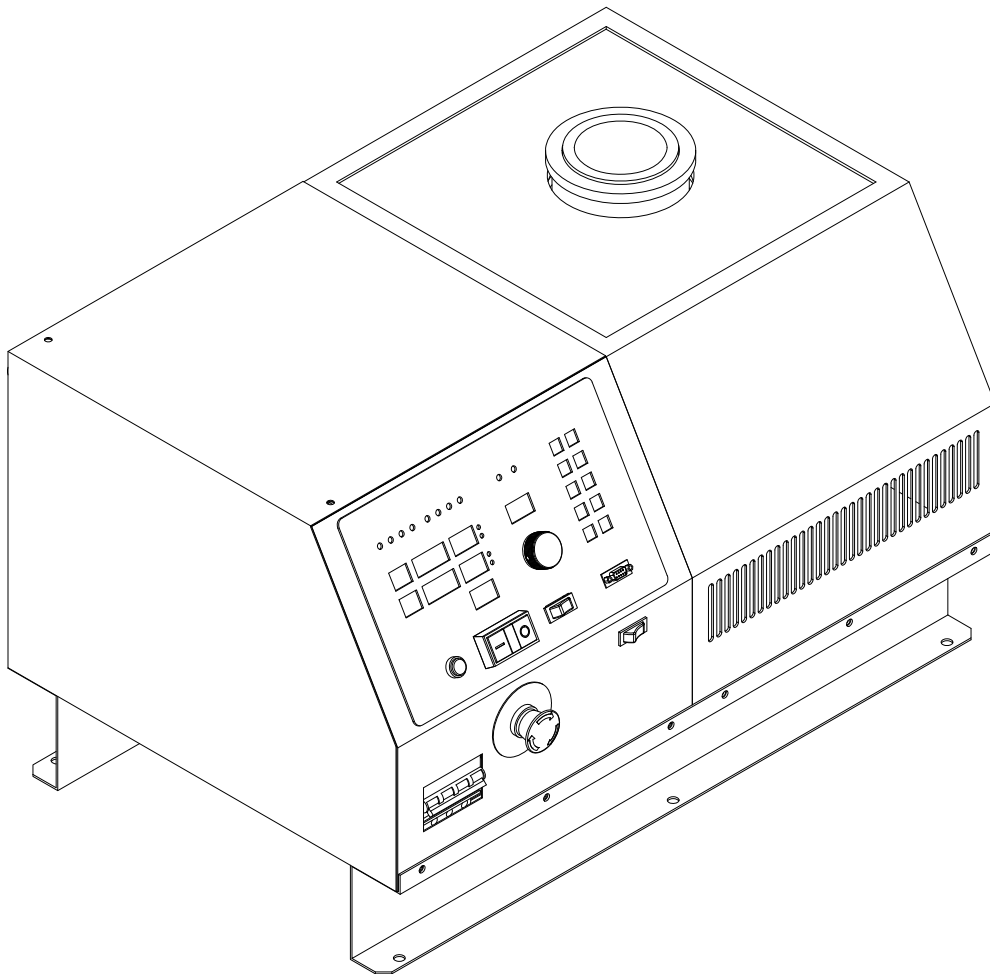


PPST SS-400 Series Induction Power Supplies 10kW Melter Spare Parts



Model GM10-240-15/45-1
Revision 10.09.05

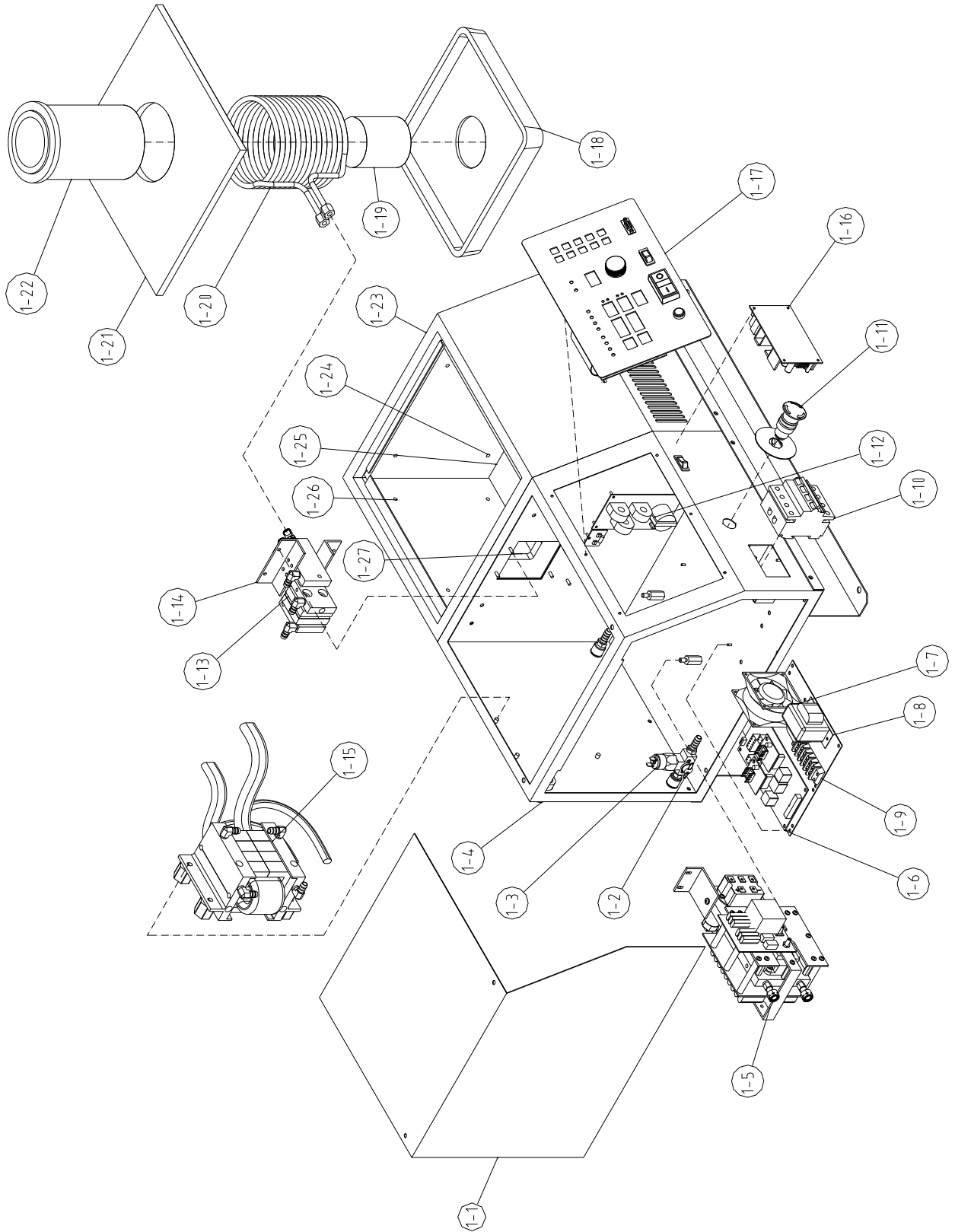


Figure 1: Cabinet assembly

Item No.	Q'ty	Description	Part Number
1-1	1	Cover	2100606
1-2	1	Switch, TEMPERATURE for Inlet (110F)	SWIT0617
1-3	1	Switch, WATER PRESSURE	SWIT0390
1-4	1	M.F GENERATOR CASE.	2100601
1-5	1	Assy. INVERTER	2100400
1-6	1	Assy. IGBT DRIVE	
1-7	1	Fan, 3.14", 230V	FANZ0632
1-8	1	Transformer, DT-1077	
1-9	4	Terminal, Block, 6 Pos.	TERM0835
1-10	1	Circuit Breaker, 240V, 32A	
1-11	1	Switch, E-stop	SWIT0784
1-12	1	PCB Assy., Sense	11110535B
1-13	1	Capacitor, 5uF, 500V ,Film	
1-14	1	Capacitor, Assy.	2100800
1-15	1	Transformer, Matching	2100200
1-16	1	Power Supply, Switching, Tri. Output, 40W	POWS0620
1-17	1	PCB Assy., Display	11110545D
1-18	1	SUPPORT DISH	2100311
1-19	1	CRUCIBLE SUPPORTER (780cc)	2100306
1-20	1	WORKCOIL (780cc)	2100341
1-21	1	REFRACIORY PLATE_TOP	2100321
1-22	1	CURCIBLE (780cc)	
1-23	1	MELTING COIL CASE	2100602
1-24	1	REFRACIORY PLATE_OUT	2100303
1-25	1	REFRACIORY PLATE_BOTTOM	2100305
1-26	2	REFRACIORY PLATE_SIDE	2100302
1-27	1	REFRACIORY PLATE_IN	2100304

Table 1: Cabinet Assembly

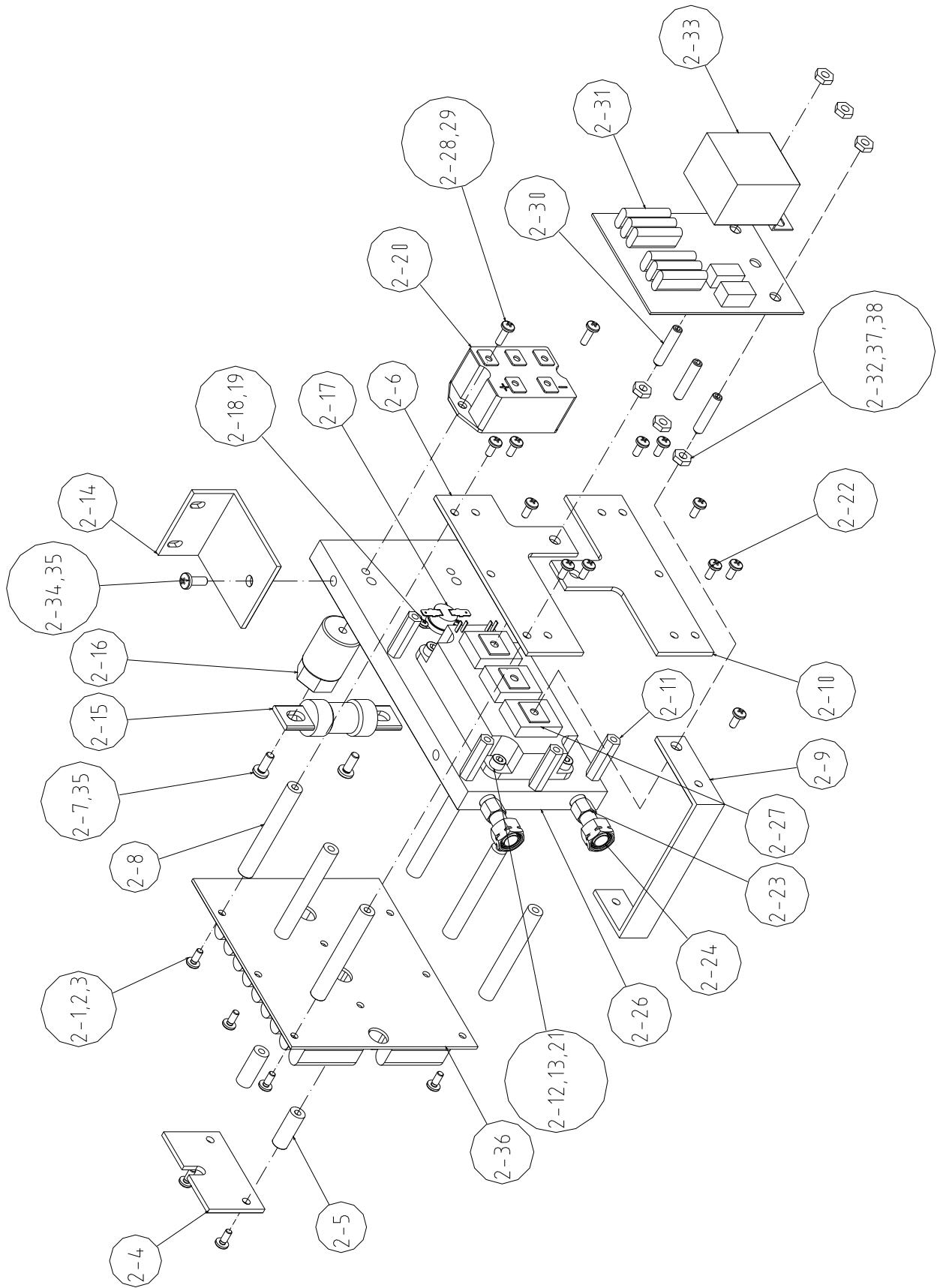


Figure 2: Inverter assembly

Item No.	Q'ty	Description	Part Number
2-1	16	SCREW, 8-32 X 1/2, PHPH, BR	SCRW0089
2-2	16	WASHER, LOCK, #8, SB	WASH0429
2-3	16	WASHER, FLAT, #8, BR	WASH0454
2-4	1	INVERTER BUS-DIV	2100405
2-5	3	STANDOFF, 5/16 RND X1-1/4, 8-32, FF, AL	STAND0198
2-6	1	INVERTER BUS-POS	2100403
2-7	2	SCREW, 1/4-20 X 1/2, PHPH, BR	SCRW0554
2-8	3	STANDOFF, 5/16 RND X 65mm, 8-32, FF, AL	
2-9	1	INVERTER BUS-O1	2100404
2-10	1	INVERTER BUS-NEG	2100402
2-11	5	S-OFF, 6mm HEX X 30mm, M4, MF, NLN	
2-12	4	SCREW, 10-32 X 1/2, PHSO, SS	SCRW0100
2-13	4	WASHER, LOCK, #10, SS	WASH0455
2-14	1	HEATSINK BRACKET	2100406
2-15	1	FUSE, 500V, 60A	FUSE0342
2-16	2	STANDOFF, 1 HEX X 40mm, M6, FF, INS	
2-17	1	Temperature Switch (65C)	SWIT0618
2-18	2	SCREW, 6-32 X 1/4, PHPH, BR	
2-19	2	WASHER, LOCK, #6, BR	
2-20	1	DIODE BRIDGE, 3 PHASE, 1600 A , 60A	REBR0226
2-21	4	WASHER, FLAT, #10, SS	WASH0491
2-22	5	SCREW, M4 X 12mm, PHPH, SS	
2-23	2	FITTING TUBE CONNECTION	11230461
2-24	2	FITTING, ELB, 3/8 C - 1/4NP, BR	FITT0639
2-26	1	HEATSINK. INVERTER	2100401
2-27	1	IGBT, 600V, 400A	
2-28	2	SCREW, 10-32 X 1/2, PHPH, BR	SCRW0051
2-29	2	WASHER, LOCK, #10, BR	
2-30	3	SCREW, M6 X 30mm, NHSO, SS	
2-31	1	PCB ASM, SNUBBER	
2-32	6	NUT M6 HEX ,SS	
2-33	1	CAPACITOR, 2uF, 1200DCV, FILM	
2-34	1	SCREW, 1/4-20 X 1/2, PHPH, BR	SCRW0554
2-35	1	WASHER, LOCK, 1/4, BR	WASH0501
2-36	1	PCB Assy, Divider Capacitors	

Table 2: Inverter Assembly

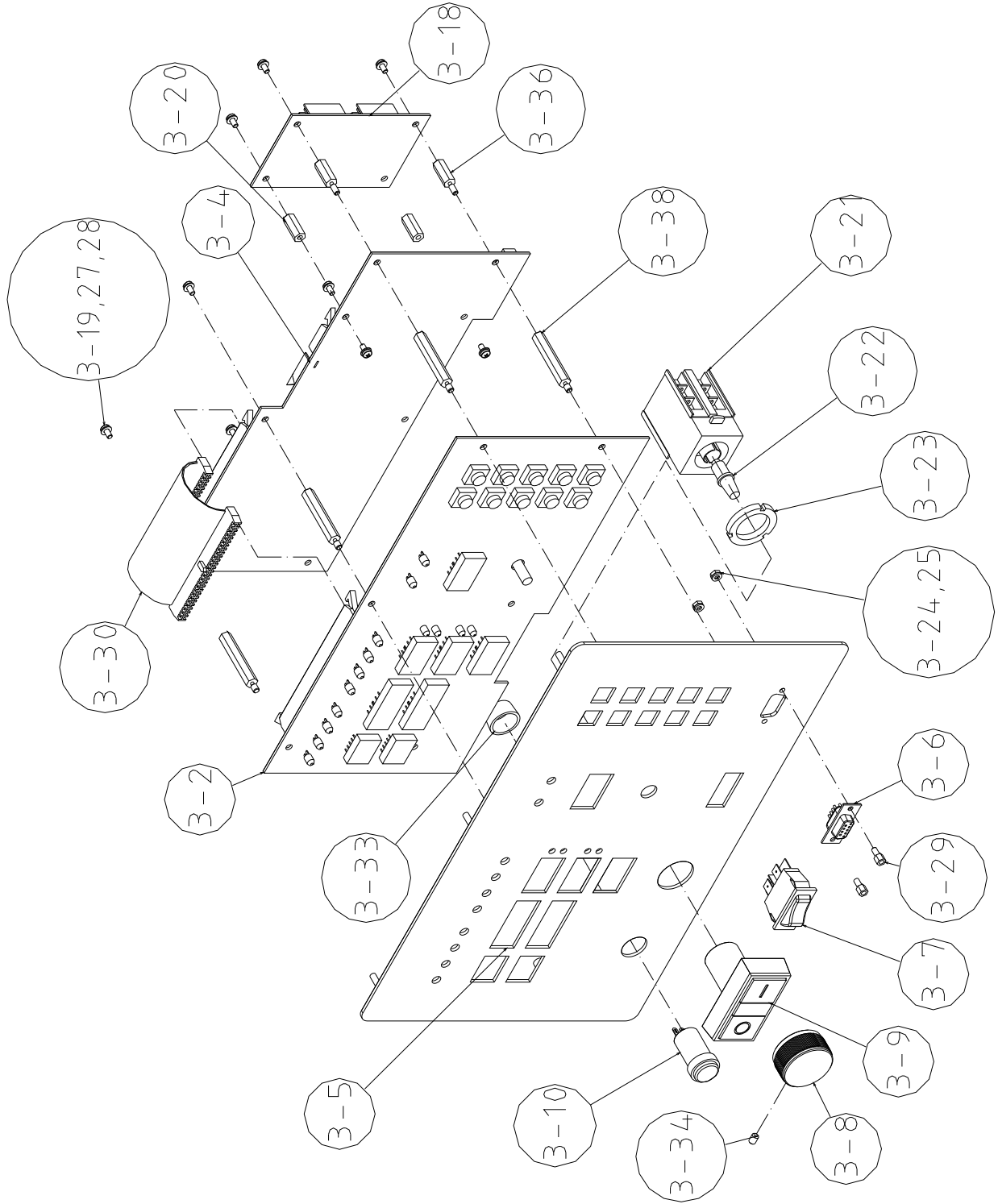


Figure 3 Display assembly

Item No.	Q'ty	Description	Part Number
3-2	1	PCB assy., display	11230545D
3-4	1	PCB assy., control	11230505E
3-5	1	Front panel	11170720D
3-6	1	Connector 9pin	
3-7	1	Switch, rocker, DPST	SWIT0166
3-8	1	Knob, 1-1/4" dia. x 5/8"	KNOB0310
3-9	1	Button, heating switch	SWIT0277
3-10	1	Switch, reset	SWIT0884
3-18	1	PCB assy., EXT-IO	11230745B
3-19	10	SCREW, 6-32 x 3/8, PHPH, BR	SCRW7476
3-20	2	S-OFF 1/4HEX 14mm, 6-32, FF,AL	
3-21	1	Housing, heating switch	
3-22	1	Lamp, heating switch	
3-23	1	Mounting Nut, heating switch	
3-24	2	NUT, HEX, #4, BR	
3-25	2	WASHER, LOCK, #4, BR	
3-26	16	WASHER, LOCK, #6, BR	WASH0435
3-27	16	WASHER, FLAT, #6, BR	WASH0436
3-28	2	S-OFF, 5mm HEX 5mm, 4-40, FM,BR	
3-29	1	WIRE, PLATE 60P ASSY	CABL0105
3-30	1	Mounting Nut, reset switch	
3-33	1	SCREW, M4 x 8MM, NHSO, SS	
3-36	2	S-OFF, 1/4HEX 14mm, 6-32, FM, AL	
3-38	6	S-OFF, 1/4HEX 31.8mm, 6-32, FM, AL	STAN0723

Table 3: Display Assembly