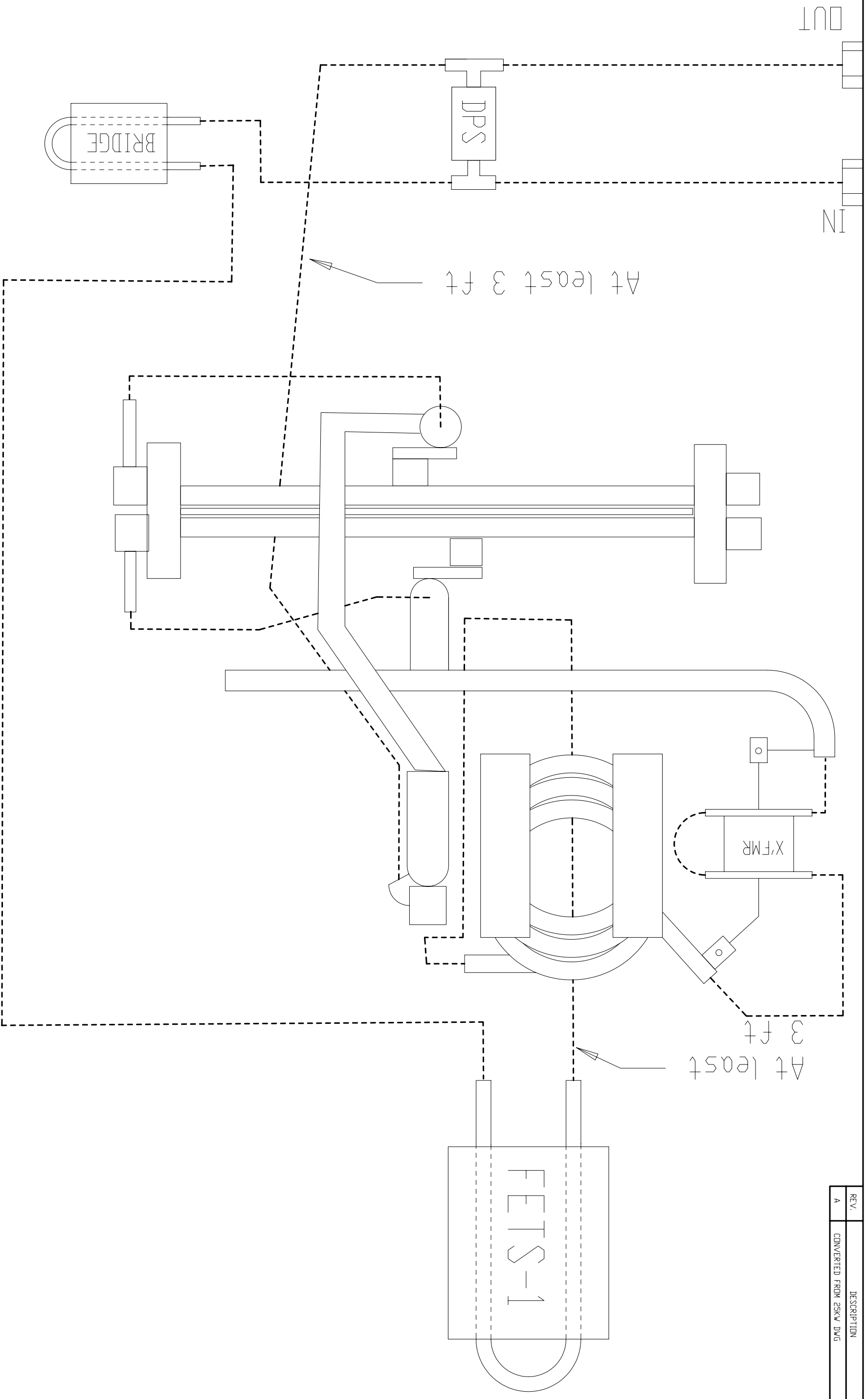


| REV. | DESCRIPTION | DATE | APPROVED |
|------|-------------------------|---------|----------|
| A | CONVERTED FROM 25kW DWG | 3/21/01 | R.L. |



- NOTES:
1. ALL WATER CONNECTIONS TO BE TESTED AT 100 P.S.I.
 2. DO NOT USE METAL HOSE CLAMPS FOR SYSTEM ASSEMBLY
USE PLASTIC, NON-CONDUCTIVE CLAMPS.
 3. ALL HOSES TO BE 3/8" I.D.

| QUANTITY PER UNIT | | SIZE | | SHEET 1 OF 1 | | UNLESS OTHERWISE SPECIFIED TOLERANCES ARE IN INCHES | | REVISION DESCRIPTION | | WATER ROUTING DIAGRAM | | DESIGNED BY | | DATE | | DWG. NO. | |
|-------------------|--|----------------------|--|--------------|--|--|--|----------------------|--|-----------------------|--|--|--|---------|--|----------|--|
| 1 | | B | | 3/18/99 | | XXX | | A | | 12.5 kW UNIT | | R.L. | | 3/21/01 | | 11220346 | |
| | | CHECKED | | H.K. | | ANGLES | | REV. BY | | REV. DATE | | PRECISION POWER SYSTEMS & TECHNOLOGY, INC. | | | | | |
| | | ISSUED | | SCALE | | MATERIAL | | REV. No. | | | | | | | | | |
| | | DO NOT SCALE DRAWING | | NONE | | FINISH | | | | | | | | | | | |