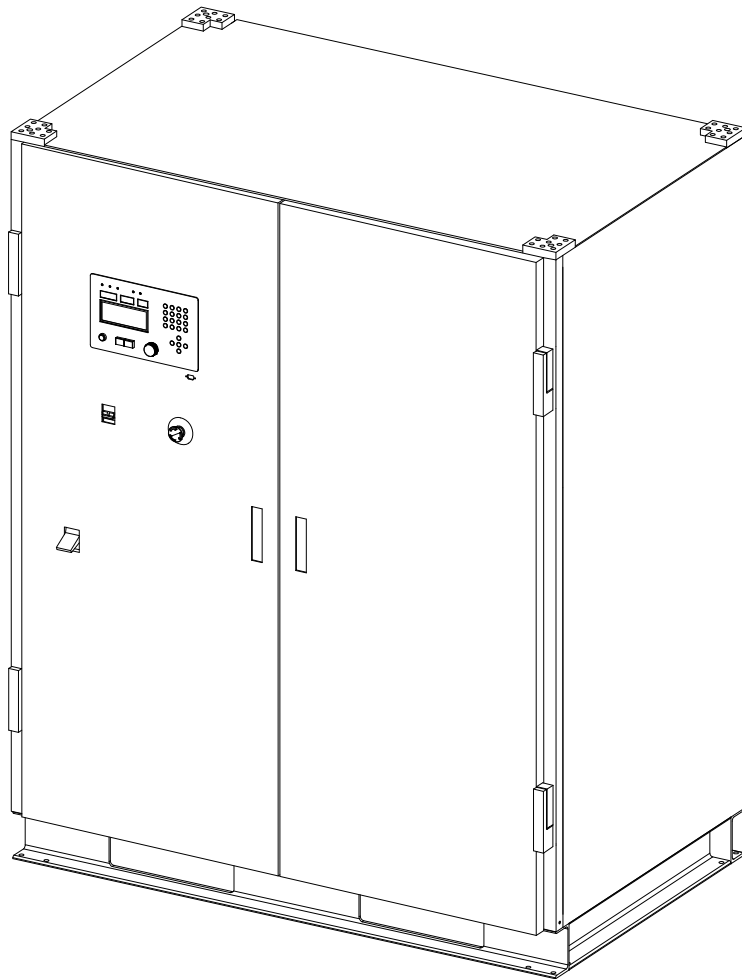
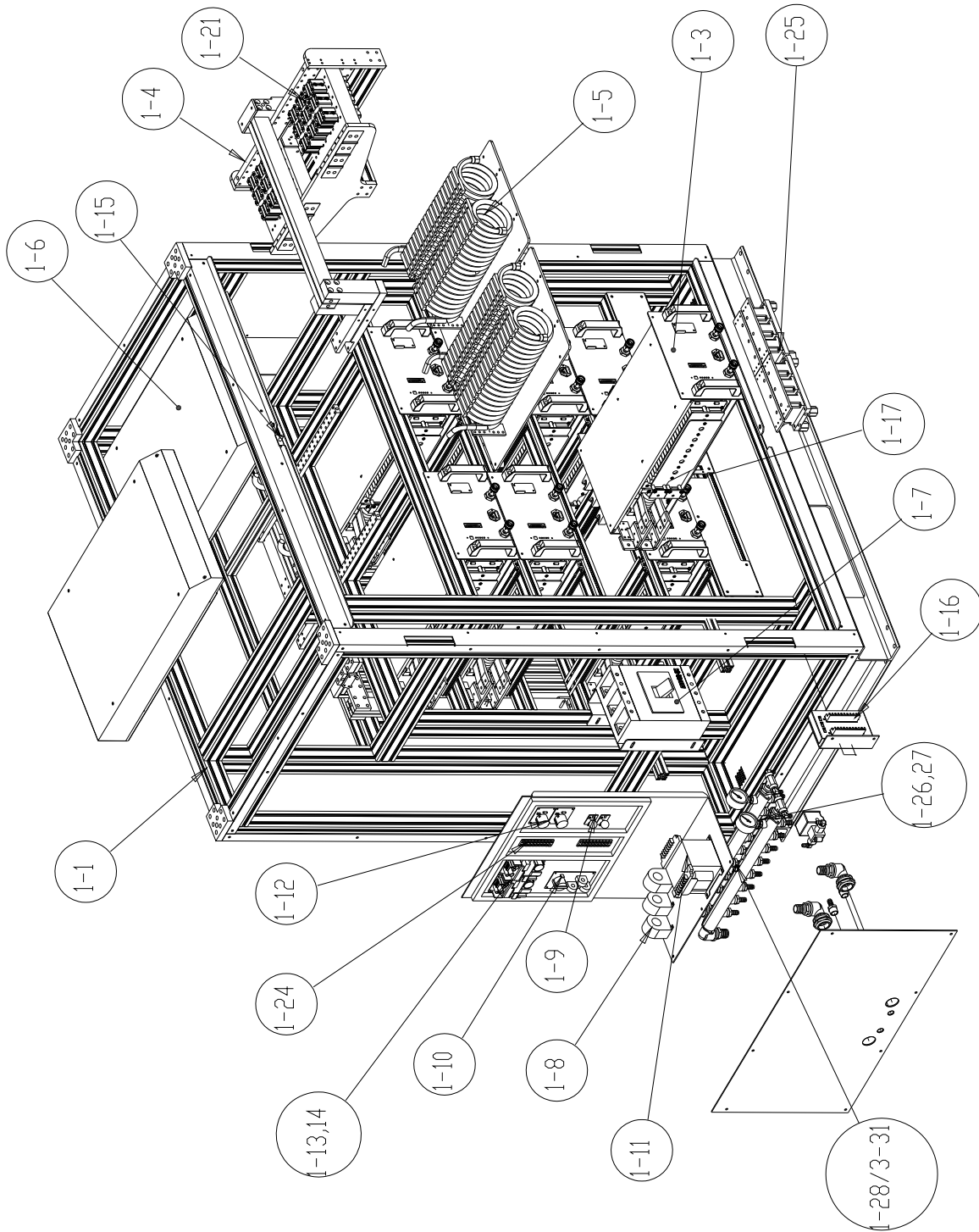


# 160kW-320kW Induction Power Supplies

## Spare Parts



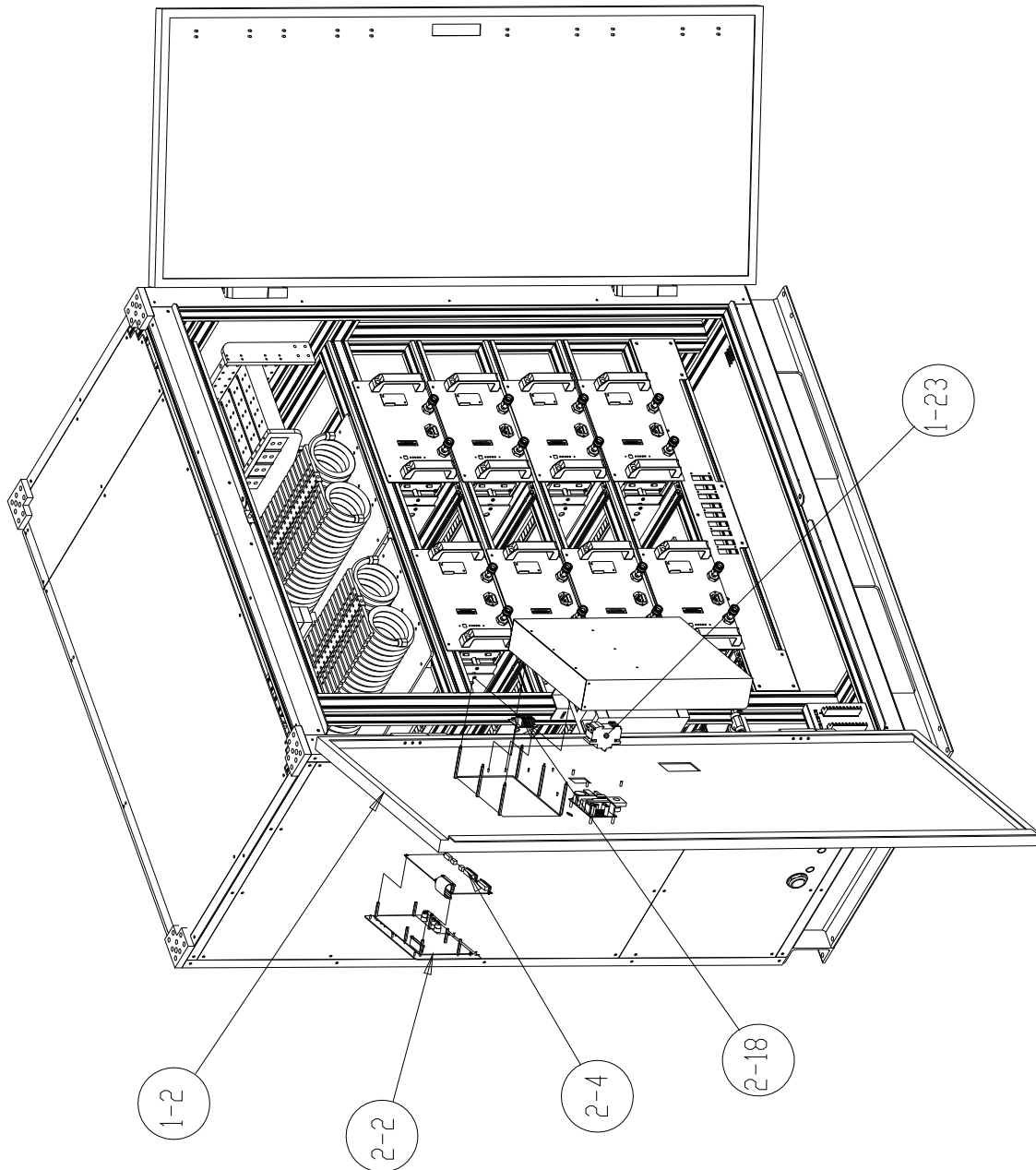
Revision Aug. 7<sup>th</sup> 2009



**Figure 1-1: Cabinet assembly**

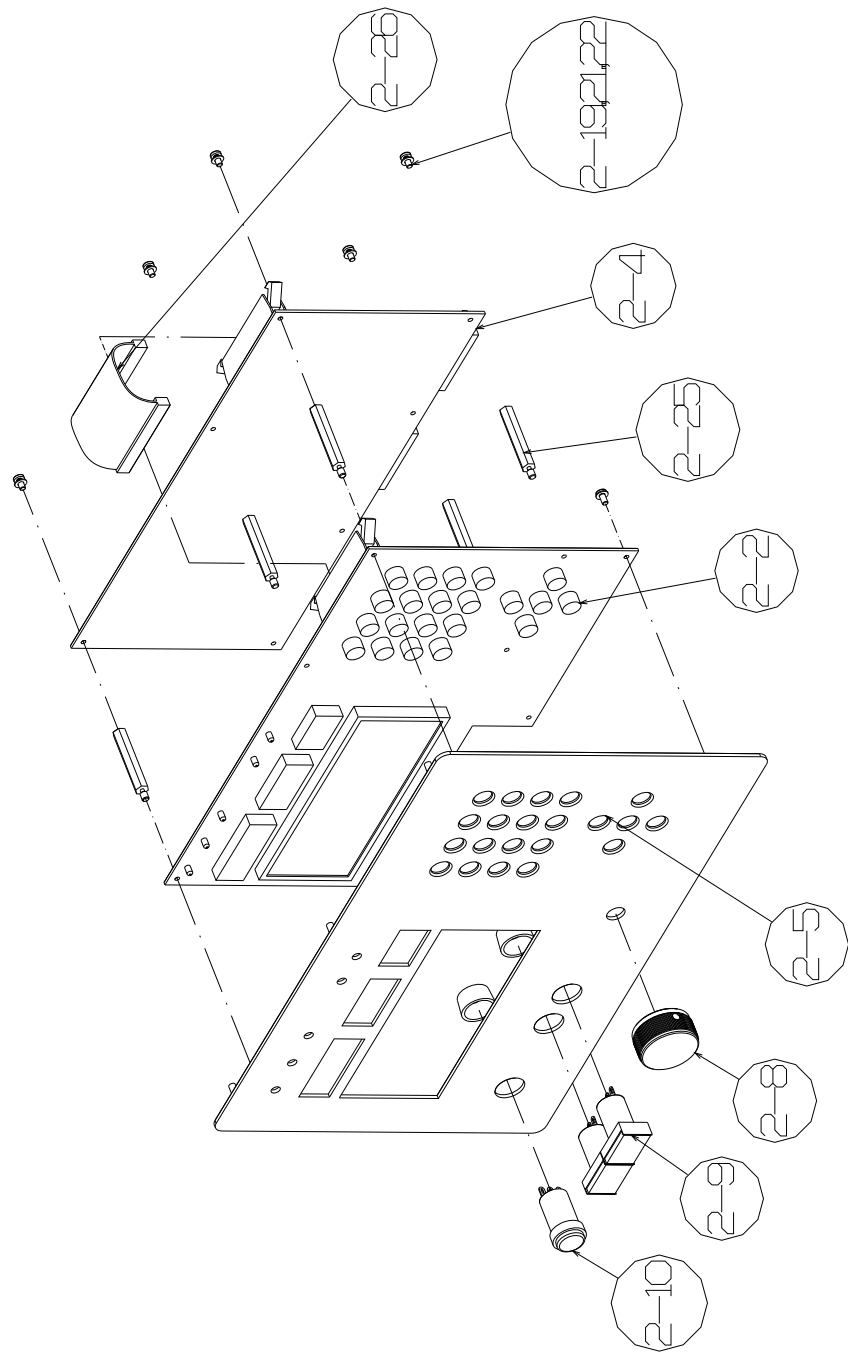
Item No.			Q'ty	Description	Part Number
1-1			1	FRAME, Aluminum profile	11250154
1-2			1	DOOR(all side)	11270182
1-3			4,6 or 8	Inverter Drawer Rack (160,240,320kW)	11270600
1-4			3	Cap. Rail. Assy	11270800
1-5			2	Inductor Assy	11270900
1-6			1	Cooler Assy	11270300
1-7			1	Circuit breaker, 320A	
1-8			3	Current-CT, 600/5A	
1-9			2	Fuse 15A	
1-10			1	PCB Assy, Supply CT	11110532
1-11			1	Transformer, 2KVA	
1-12			2	PCB Assy, PT	11170532
1-13			2	Power Supply, switching, 12VDC, 40W	POWS0620
1-14			1	Power Supply 60W	POWS0663
1-15			2	Switch, Door interlock	SWIT0161
1-16			1	Ext-Term Board	11250752
1-17			1	PCB, Assy, Distributer	11270762
1-21			36	CAPACITOR, 0.21uf, 1000V, 400A	CAPA0305
1-23			1	Circuit breaker 32A	
1-24			2	Terminal Block 8POS	TERM0836
1-25			6	Rec. Diode SKKD 260/16	
1-26			1	Cooling , Header, Inlet	
1-27			1	Cooling , Header, Outlet	
1-28			1	Switch, DP 30PSI	SWIT0490
3-31			1	Switch, temp.110F	SWIT0617
			1	Sensor, DEW	SENS0001

**Table 1: Cabinet assembly**



**Figure 1-2: Door assembly**

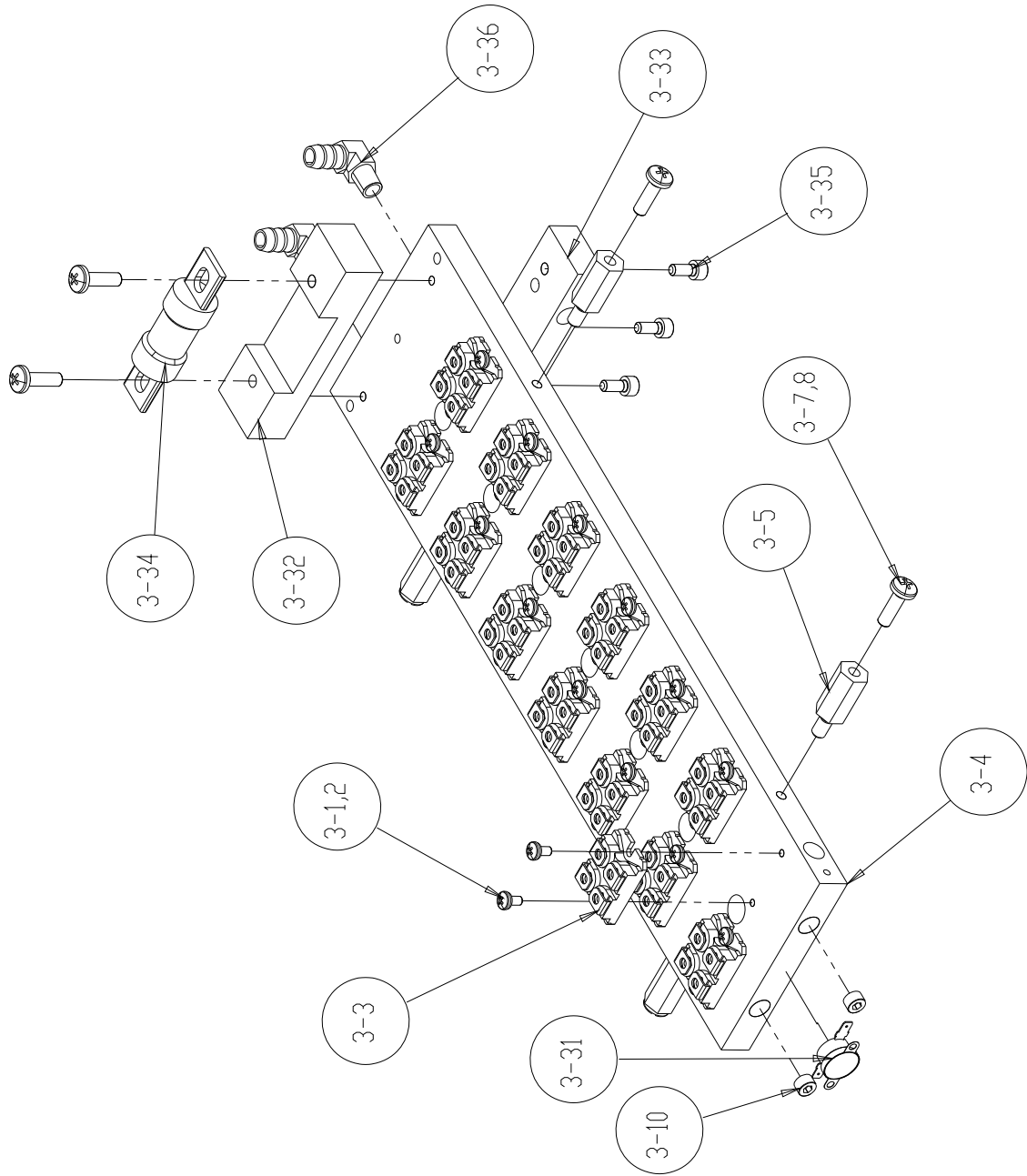




**Figure 2-3: Display assembly**

Item No.			Q'ty	Description	Part Number
1-2			1	DOOR(all side)	11270182
2-2			1	PCB ASSY,. Display	11250542
2-4			1	PCB ASSY,. Control	11250502
2-5			1	DISPLAY PANEL	11250720
2-8			1	KNOB, 1-1/4" DIA. x 5/8"	KNOB0310
2-9			2	SWITCH, Heating	
2-10			1	SWITCH, Reset	SWIT0884
2-18			1	PCB, Assy, Power	11250772
2-19			14	SCREW, 6-32 x 3/8, PHPH, BR	SCRW7476
2-21			18	WASHER, LOCK, #6, BR	
2-22			18	WASHER, FLAT, #6, BR	WASH0436
2-25			7	S-OFF, 1/4HEX 31.8mm, 6-32, FM, AL	
2-26			1	WIRE, PLATE 30P ASSY	

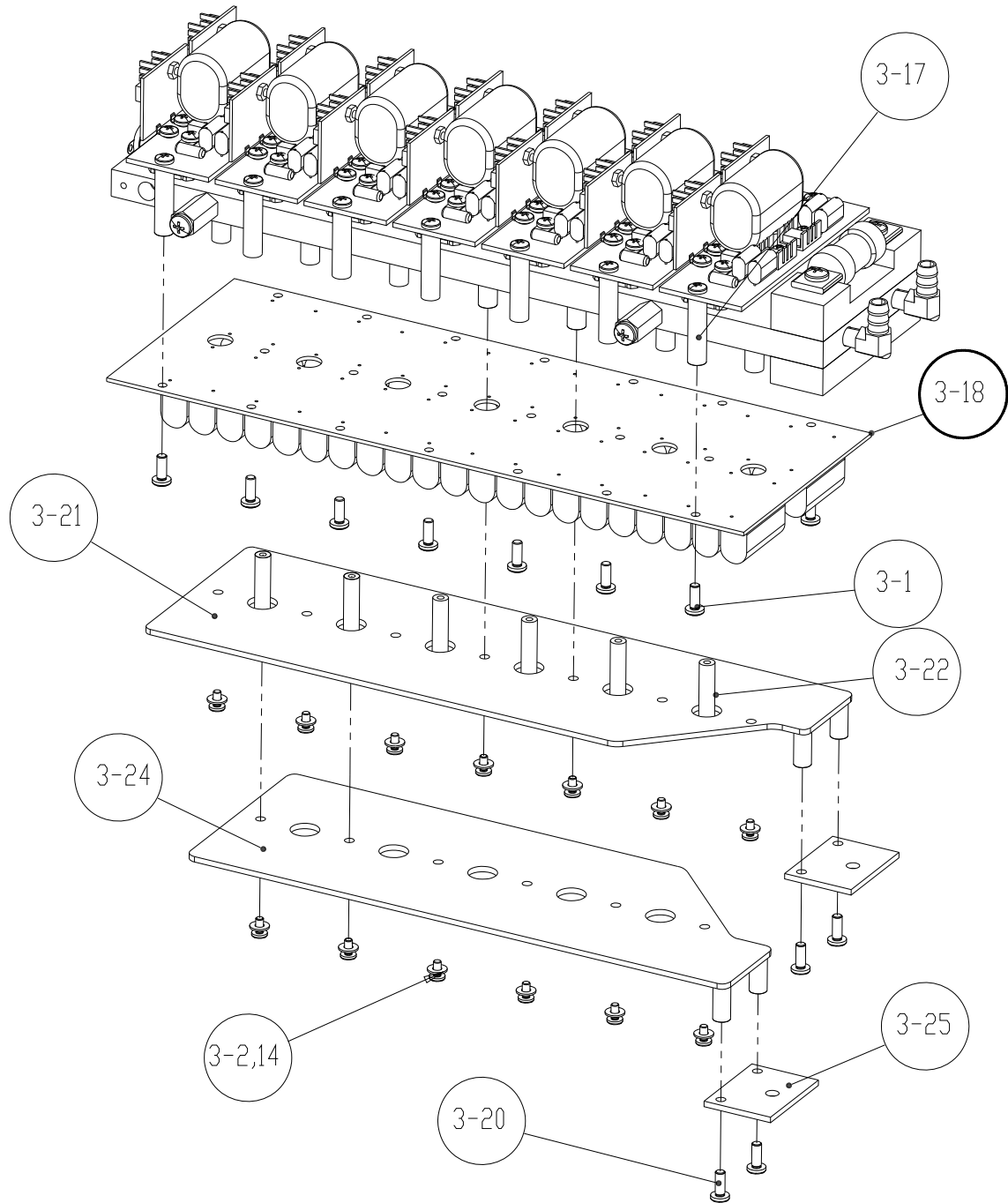
**Table 2: Door & Display assembly**



**Figure 1-3: Inverter assembly**





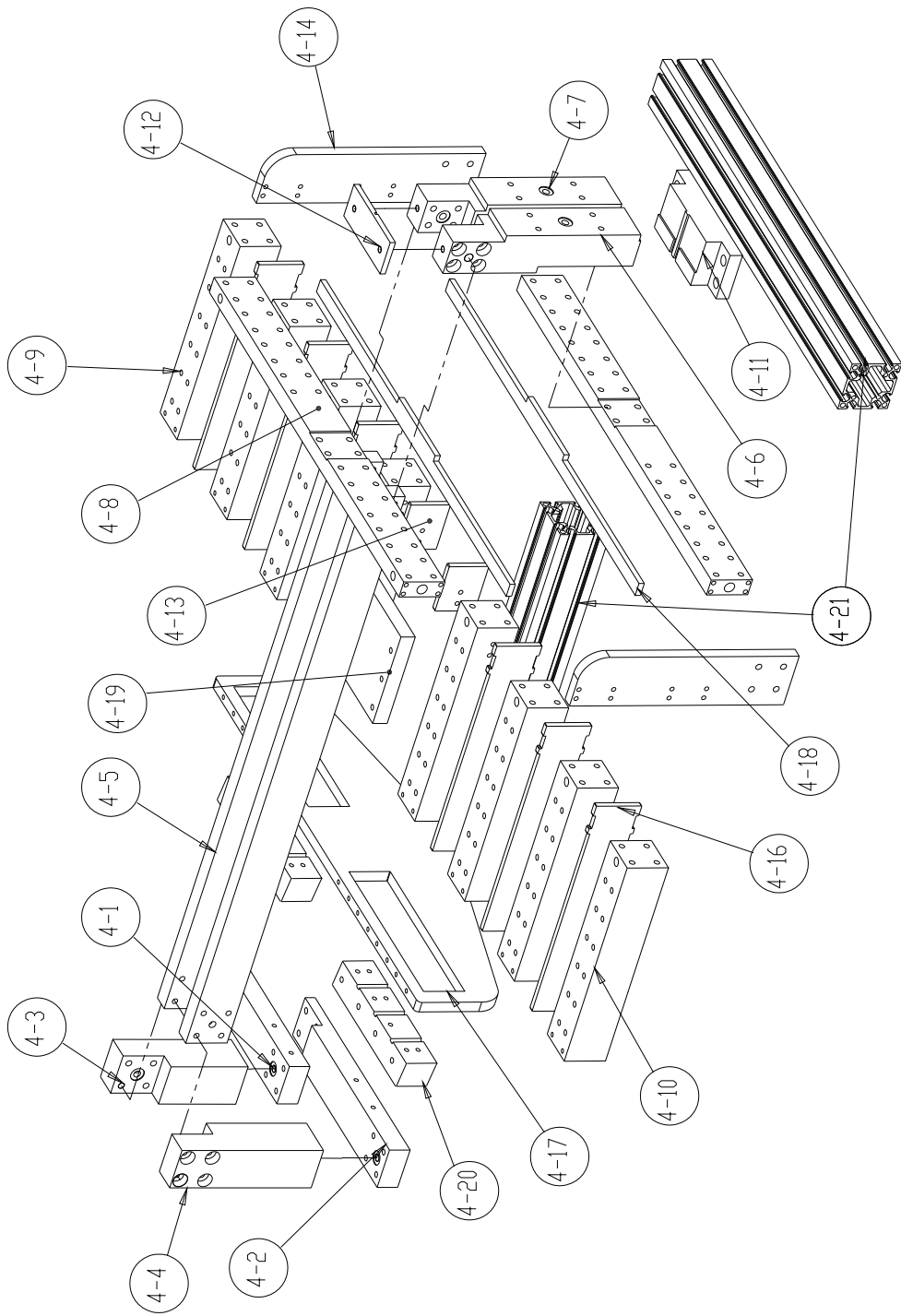


**Figure 4-3: Inverter assembly**

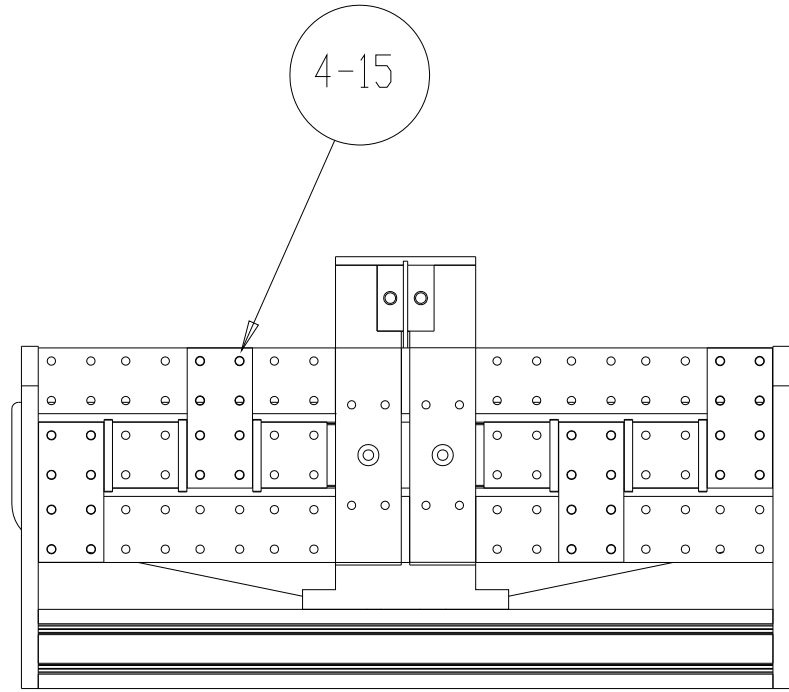
**INVERTER ASM 320kW**

Item No.			Q'ty	Description	Part Number
3-1			82	Screw, 8-32 x 1/2, PHPH,BR	SCRW0089
3-2			138	Washer, Lock #8,BR	WASH0429
3-3			14	MOSFET, 1200V, 32A	MOSF0232
3-4			1	Heatsink, Inverter	11270425
3-5			4	STANDOFF, 1/2H, 1,1/4-20,MF,AL	STAN0188
3-7			4	Screw, 1/4-20 x 5/8 PHPH,BR	SCRW0011
3-8			2	Washer, Lock, 1/4 SB	WASH0501
3-9			56	Screw, M4 x 8mm, PHPH,BR	SCRW0102
3-10			3	Screw, 1/8NPT x 3/8" NHSO.SS	
3-11			7	Capacitor 2.2uF, 1000V Film	CAPA0305
3-12			14	PCB, ASM, Gate Drive	11170525
3-14			110	Washer, Flat #8,BR	WASH0454
3-15			7	PCB,ASM, Snubber	11230515
3-16			7	Standoff, 5/16 RNDX 3, 8/32-20	STAN0002
3-17			14	S-OFF, 5/16 RND X 1 1/14,8-32	STAN0198
3-18			1	PCB ASM, Divider Capacitors	11230705
3-20			4	Screw, 10-32 x 1/2, PHPH, BR	SCRW0051
3-21			1	BUS, DC, Inverter	11270409
3-22			6	S-OFF, 3/8 RND x 2-3/4, 8-32,FF,AL	STAN0724
3-24			1	BUS, AC inverter	11270408
3-25			2	Plate, X'former Connection	11170410
3-31			1	Switch, Temp. 110F	SWIT0617
3-32			1	FUSE HOLDER	11270618
3-33			1	INVERTER COOLING HEAD	11270619
3-34			2	Fuse, 500V, 60A	FUSE0340
3-35			3	Screw, 10-32 x 3/4, SHSO, SS	SCRW1005
3-36			2	FITTING, ELB, 3/8 C - 1/8NPM, BR	

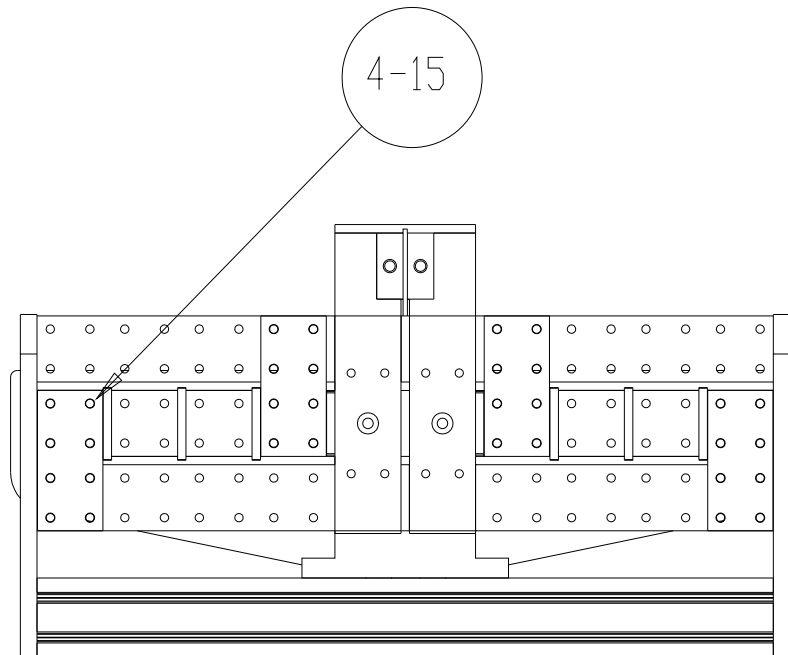
**Table 3: Inverter assembly**



**Figure 1-4: Cap. Rail assembly**



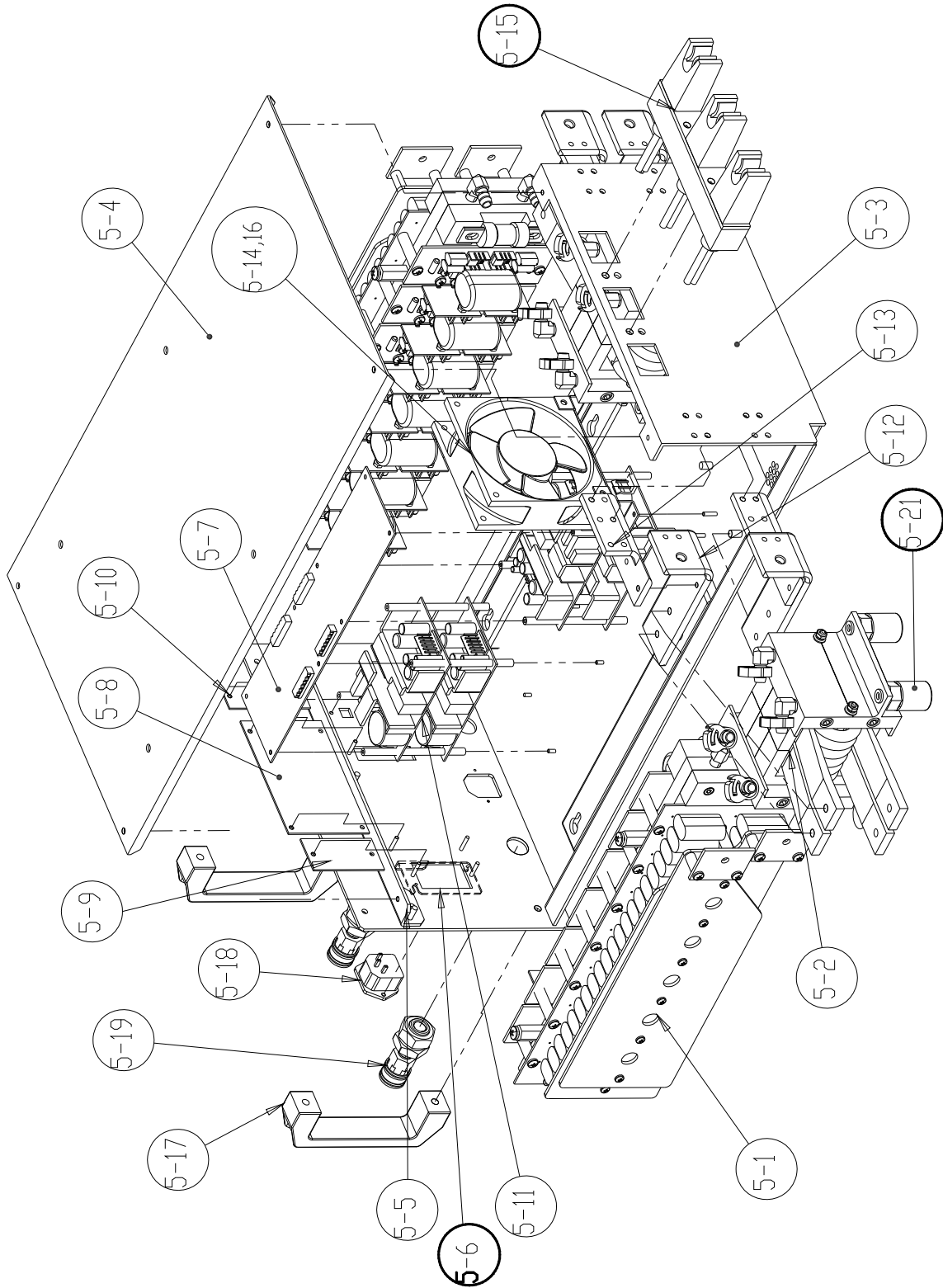
**Figure 4: Cap. Rail assembly – Capacitor 2 Series x 3 Parallel**



**Figure 4: Cap. Rail assembly - Capacitor 3 Series x 2 Parallel**

Item No.			Q'ty	Description	Part Number
4-1			1	BUS-Output T1	11270851
4-2			1	BUS-Output B1	11270852
4-3			1	BUS-Output T2	11270853
4-4			1	BUS-Output B2	11270854
4-5			2	BUS-Output	11270855
4-6			1	Output-Left	11270856
4-7			1	Output-Right	11270857
4-8			2	Cap. Rail Cross bar	11270858
4-9			6	Cap. Rail Bus	11270859
4-10			2	Cap. Rail Bus side	11270861
4-11			1	Output Support	11270865
4-12			1	Cap. Output	11270866
4-13			2	Guide, Output	11270867
4-14			2	Guide, Output	11270868
4-15			8	Short Bar	11270869
4-16			6	Insulator	11270871
4-17			1	Rail.Support	11270872
4-18			2	Insulator.Cap. Rail	11270873
4-19			2	Cap. Jumper Bar	11270874
4-20			1	Cooling Header Cap. Rail	11270875
4-21			1	Profile Assy 60x60	

**Table 4:Cap. Rail assembly**



**Figure 5: Inverter Drawer Rack assembly**

Item No.			Q'ty	Description	Part Number
5-1			2	Inverter Assy	11270400
5-2			2	Transformer , Matching Assy	11270200
5-3			1	Inverter, Cabinet	11270601
5-4			1	Cover, Inverter Cabinet	11270603
5-5			1	Bracket, Inverter Cabinet	11270616
5-6			1	Cover, PCB	11270620
5-7			1	PCB Assy, Buffer	11270572
5-8			1	PCB Assy, Inv. Control	11270732
5-9			1	PCB Assy, Inverter (PT)	11270322
5-10			1	PCB Assy, Inverter LED	11270312
5-11			4	Power Supply, switching, 60W	POWS0663
5-12			4	Transformer Connection	11170613
5-13			4	Supporter, Modules OutBus	11170614
5-14			1	Fan, Bracket	11170617
5-15			1	DC input, Connector	
5-16			1	FANS, 230V, AC, 120mm	FANS0230
5-17			2	Handle	
5-18			1	Socket, AC 220V	
5-19			2	Fitting, Q'Dis connection	
5-21			8	S-off, 1/4"H 30mm, M6,FF,INS	

**Table 5: Inverter Drawer Rack assembly**

\* Parts shaded above are recommended spare parts for OEM's