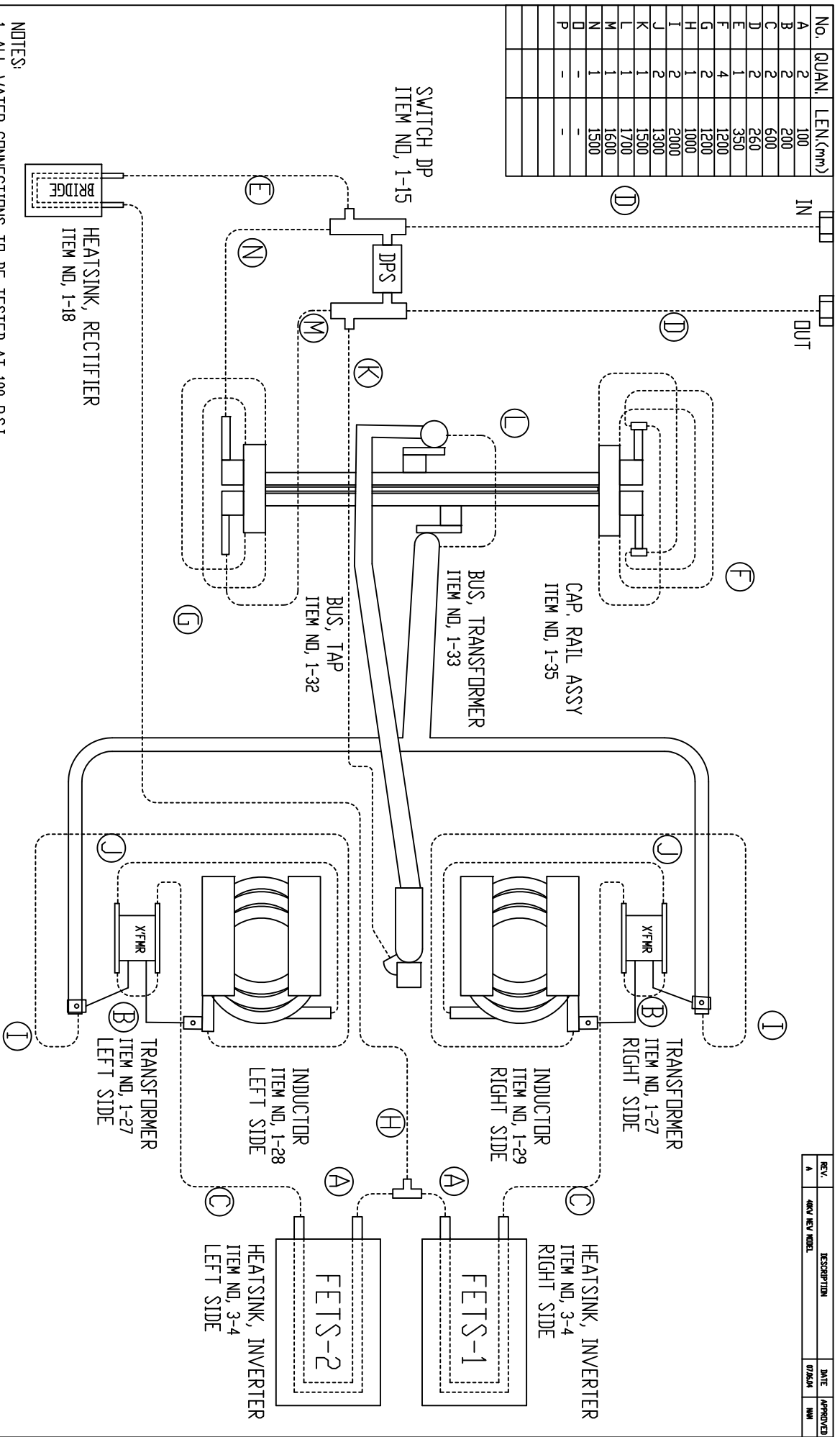


No.	QUAN.	LEN.(mm)
A	2	100
B	2	200
C	2	600
D	2	260
E	1	350
F	4	1200
G	2	1200
H	1	1000
I	2	2000
J	2	1300
K	1	1500
L	1	1700
M	1	1600
N	1	1500
P	-	-



- NOTES:
1. ALL WATER CONNECTIONS TO BE TESTED AT 100 P.S.I.
 2. DO NOT USE METAL HOSE CLAMPS FOR SYSTEM ASSEMBLY USE PLASTIC, NON-CONDUCTIVE CLAMPS.
 3. ALL HOSES TO BE 3/8" I.D.

REV.	DESCRIPTION	DATE	APPROVED
A		07/06/04	MM

QUANTITY PER UNIT		SHEET 1 of 1		REVISION DESCRIPTION		WATER ROUTING DIAGRAM		Precision Power Systems & Technology, Inc.	
1		07/06/04	MM	A		25 kW UNIT	YANG	07/06/04	11170325